

RIVERFLY PARTNERSHIP DATA REPORT

JANUARY 2024 SURVEY RESULTS

A summary of findings from standard Riverfly monitoring surveys across the UK for the month of January 2024. The data in this report is taken from Cartographer.



PHOTO CREDIT: JULIE HALLAM FROM REVIVE THE WYE

KEY HIGHLIGHTS

236

Surveys taken
this month

45

New sites have
been created this
January

12

Newly trained
monitors welcomed to
Riverfly Partnership

SIGNIFICANT EVENTS

- UK was hit by three storms through January (Henk, Isha and Jocelyn)
- The Anglers Trust released monitoring results that suggest '83% of English rivers have evidence of high pollution from sewage and agriculture'
- The government taken to court over pollution in the river Wye

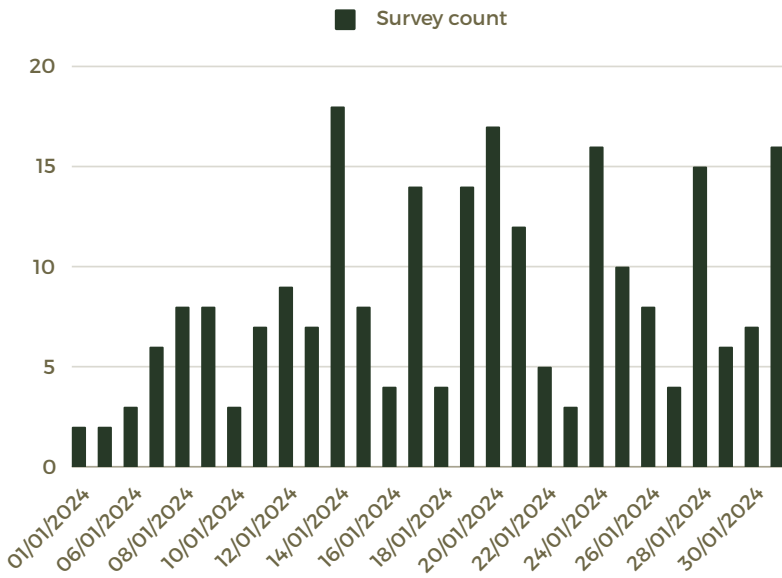


Empowering citizens to protect their rivers

The Riverfly Partnership

JANUARY 2024 SUMMARY

SURVEY COUNTS



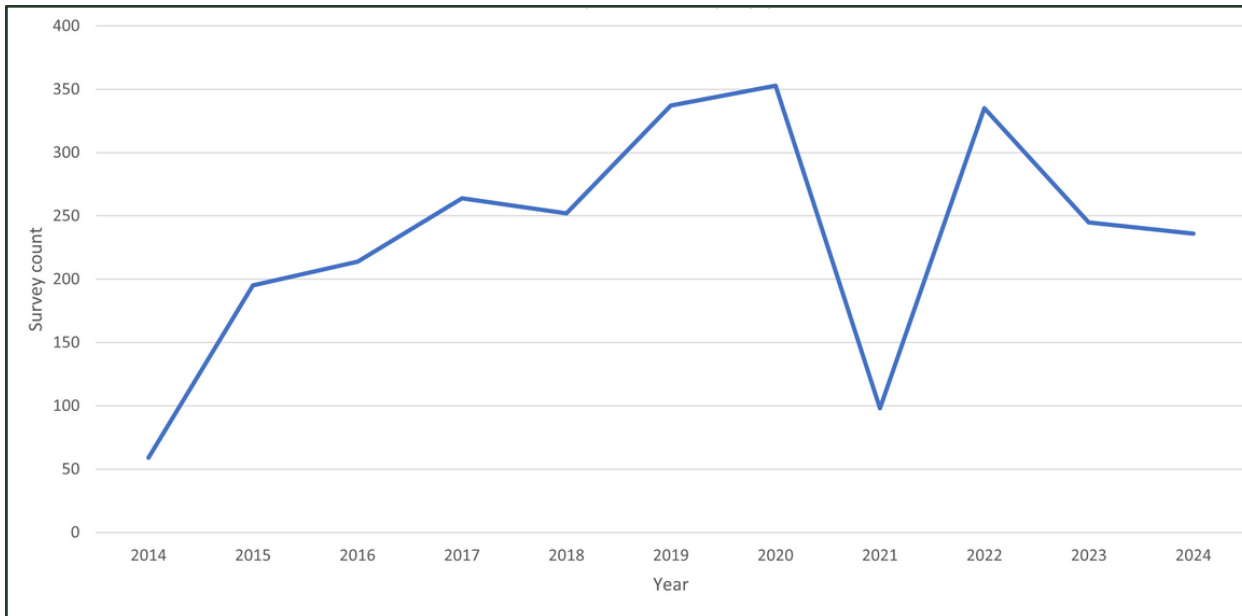
236

Surveys were recorded in total

19 reports of rivers flowing too high/fast to take a sample

2 reports of drought/low flow in Wear

SURVEY COUNTS IN JANUARY 2014-2024



Noticeable dip in survey count in 2021 can be attributed to lockdown and monitors unable to survey



Left photo - Julia Grollman observed white discharge from this outfall on the river Beck at High Broom Wood



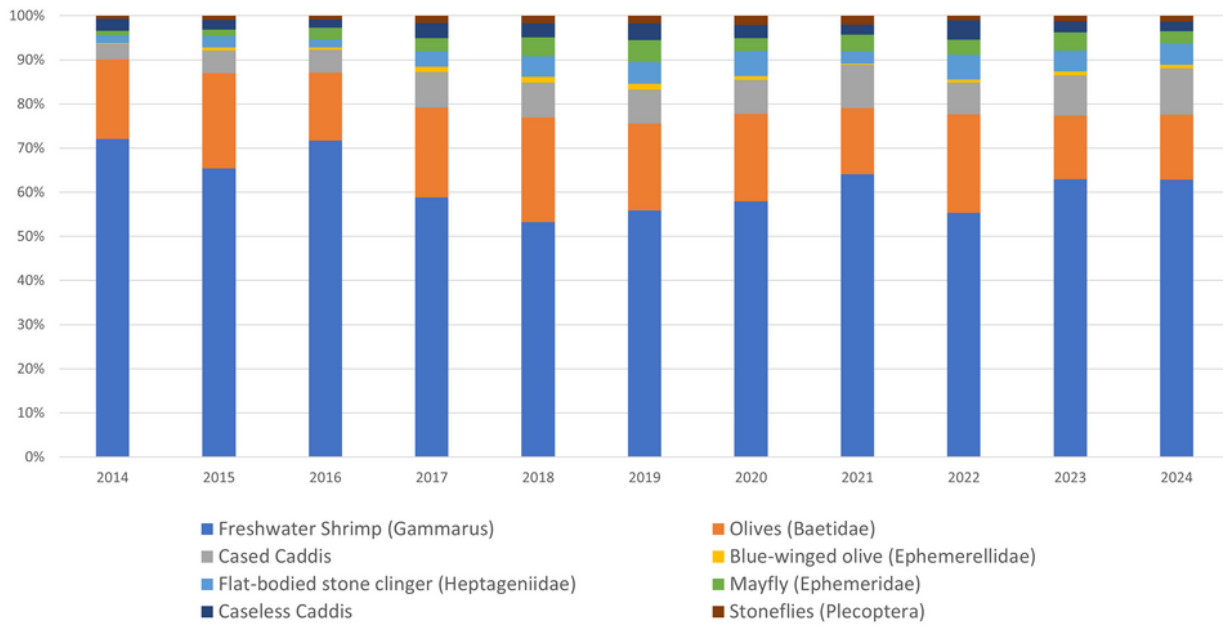
Right photo - Ed Randall noted cloudy water on Duke of Northumberland's river at Donkey wood DNR

The Riverfly Partnership

JANUARY 2024 SUMMARY

ABUNDANCE PROPORTION %

January abundance proportions by group by year



*Gammarus takes up the majority proportion of the graph, therefore please see graph below created excluding Gammarus for a better visual of the other groups.

7,591

Cased caddis counted this year, an increase from 5,754 last year

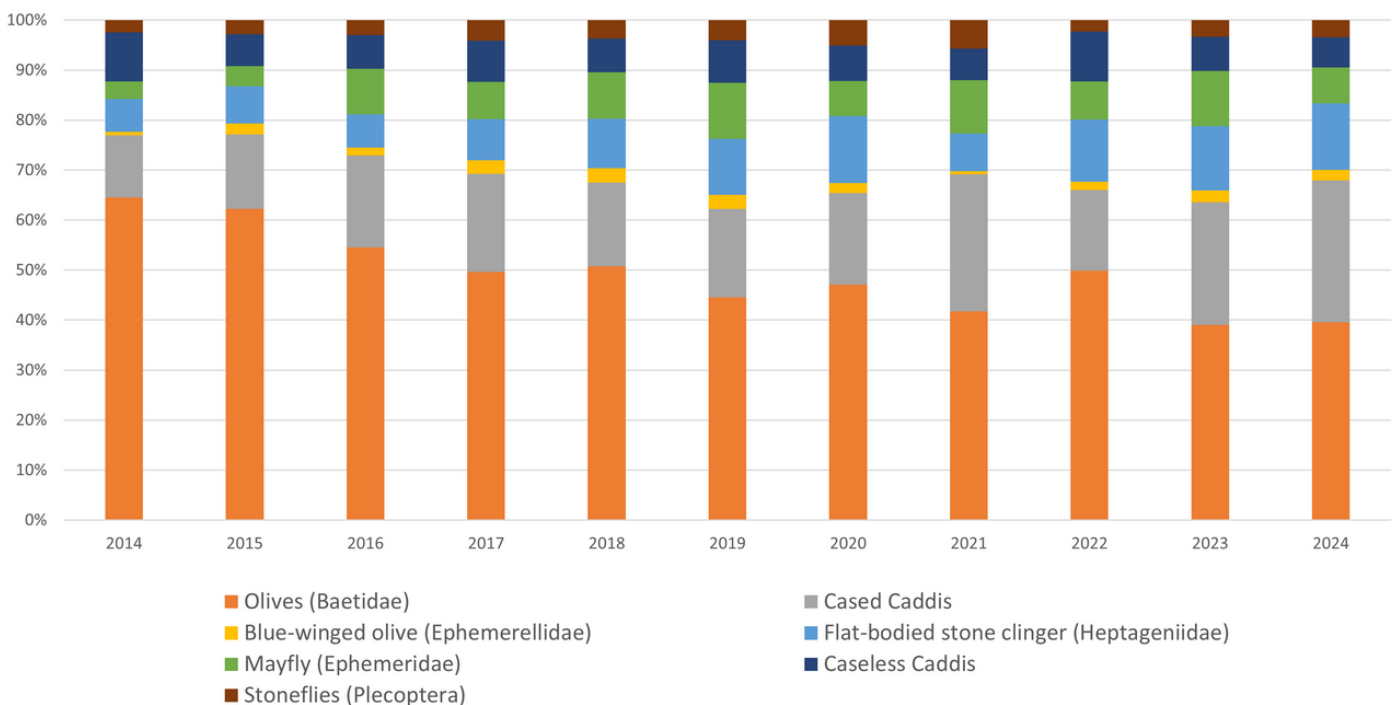
1,919

Whilst it's not unusual to find many Mayfly (Ephemeroidea) in January, fewer were counted versus 2022 & 2023.

-4%

The amount of surveys this year is -4% vs 2023, but counts are up +12% vs 2023, which suggests abundance is increasing.

January abundance proportions by group by year (excluding Gammarus)



The Riverfly Partnership

JANUARY 2024 SUMMARY

TRIGGER LEVEL BREACHES

3

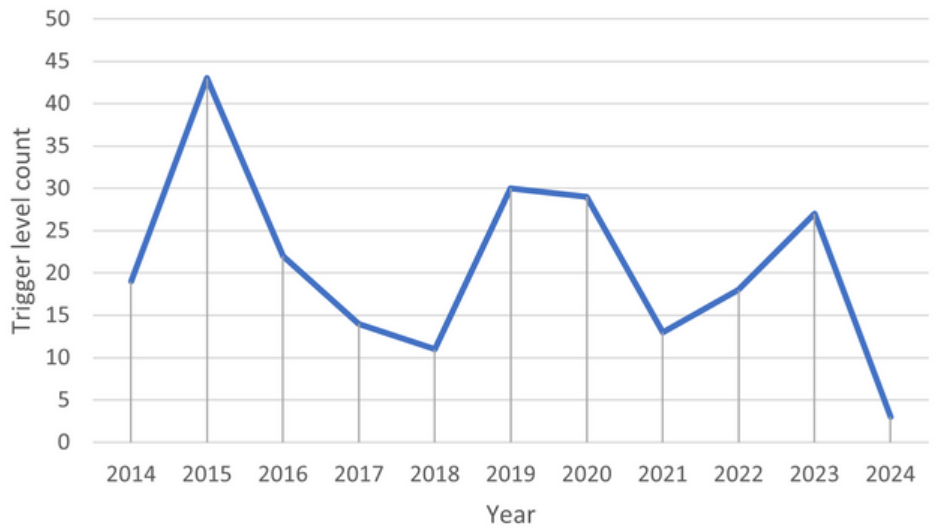
Confirmed trigger level breaches

Team	River	Site	NGR	Trigger level	RMI score
LCSP/Invertebrate Monitoring	Mid Bain	Tesco car park	TF 25888 69740	6	4
Zoological Society of London	Yeading Brook	Headstone Manor	TQ 14000 89300	3	1
Manningtree PACE ARMI	Suffolk Stour	Langham Low Lift	TM 02510 34371	6	5

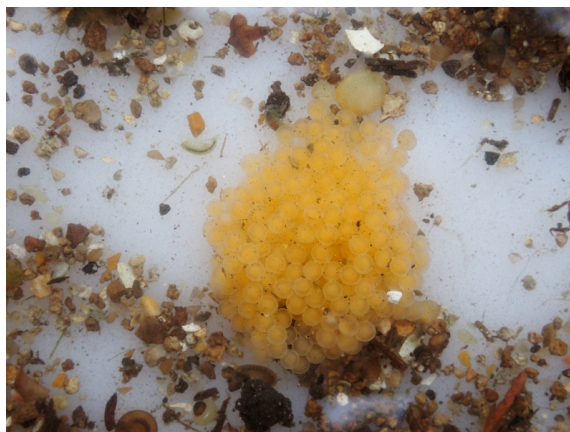


Note the big decrease in TLBs recorded this year. This is due to new systems in place through Cartographer, where monitors can mark a sample as not possible due to high flow/drought/other. This decreases false breaches being reported.

Confirmed Trigger Level Breaches 2014-2024



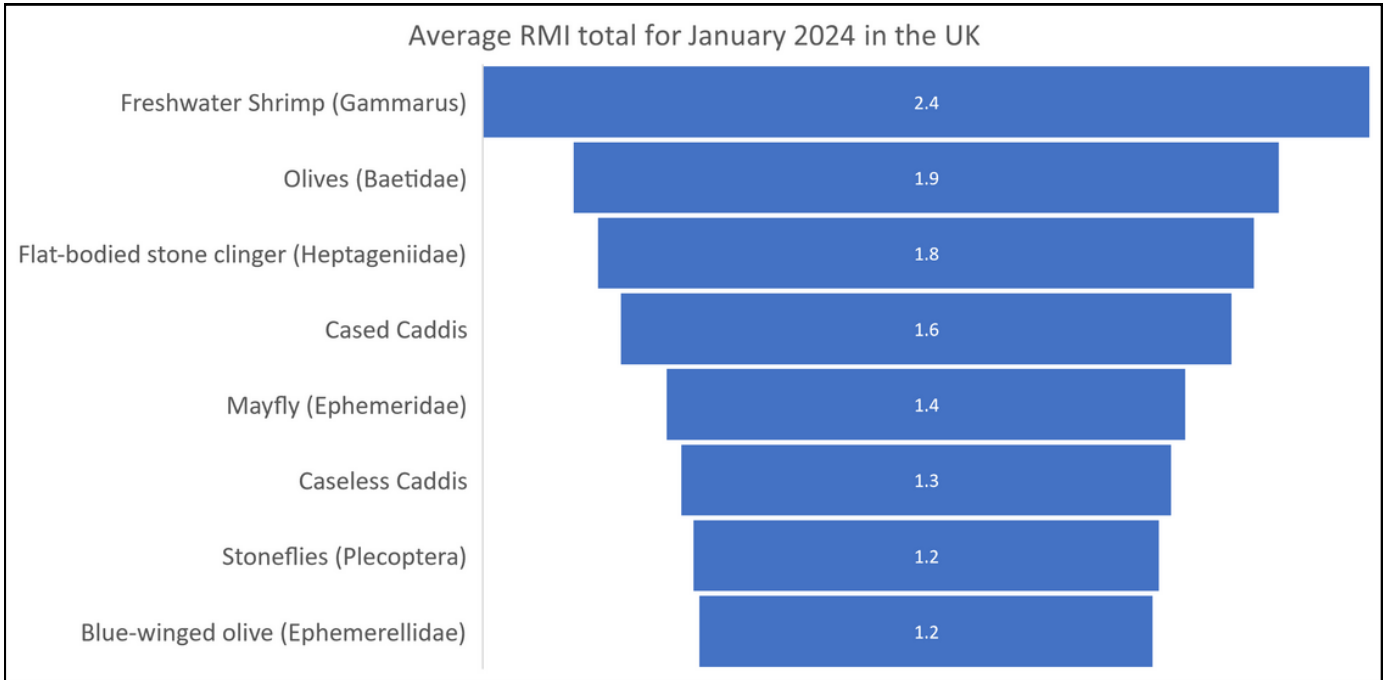
CLUSTER OF BULLHEAD EGGS
PHOTO CREDIT: TOM FITTON
FROM RIVER CRAY RMI



The Riverfly Partnership

JANUARY 2024 SUMMARY

RMI MEAN SCORES



2.4

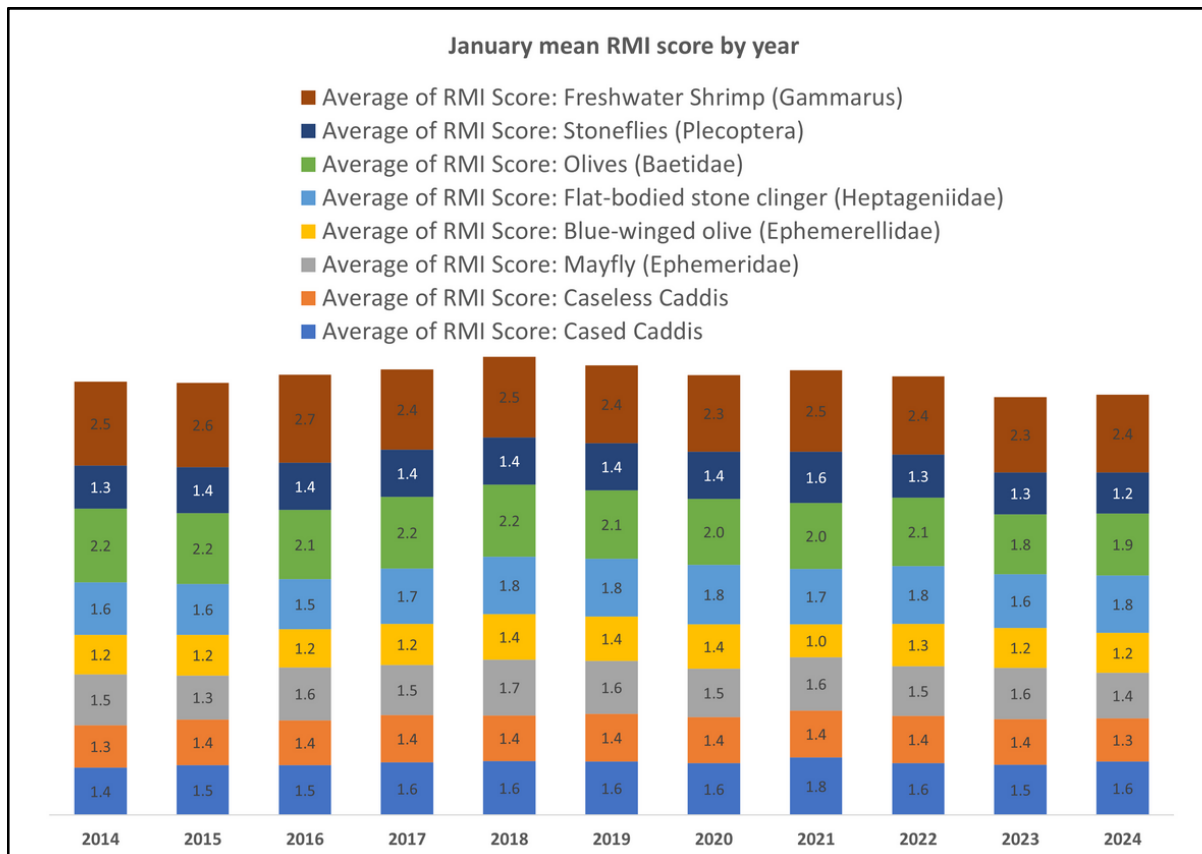
Gammarus has the top RMI score with a similar score every year for the past 10 years.

1.9

Whilst Baetidae has the second top average RMI score this January, in comparison to previous years the RMI score is in decline.

1.8

Heptageniidae has the biggest increase in score this year vs last.



The Riverfly Partnership

JANUARY 2024 SUMMARY

RMI MEAN SCORE BY CATCHMENT FOR JAN 24

